

# MONTHLY MEMBERSHIP PROGRESS REPORT

District 303

Results as of: 9/30/2023

GMT:

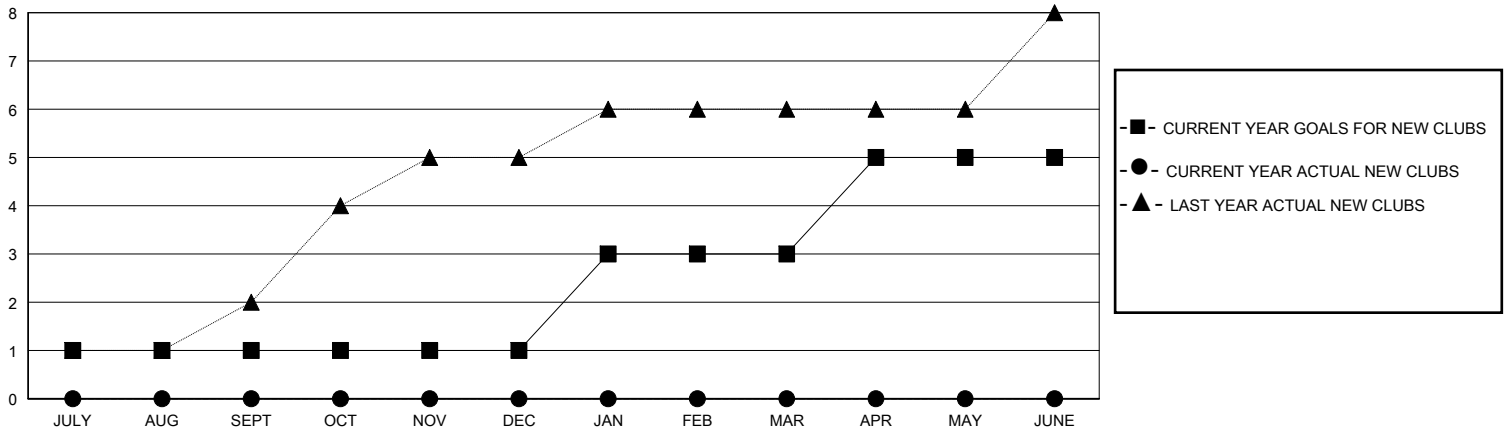
LOCATION HONG KONG, CHINA

GMT CA

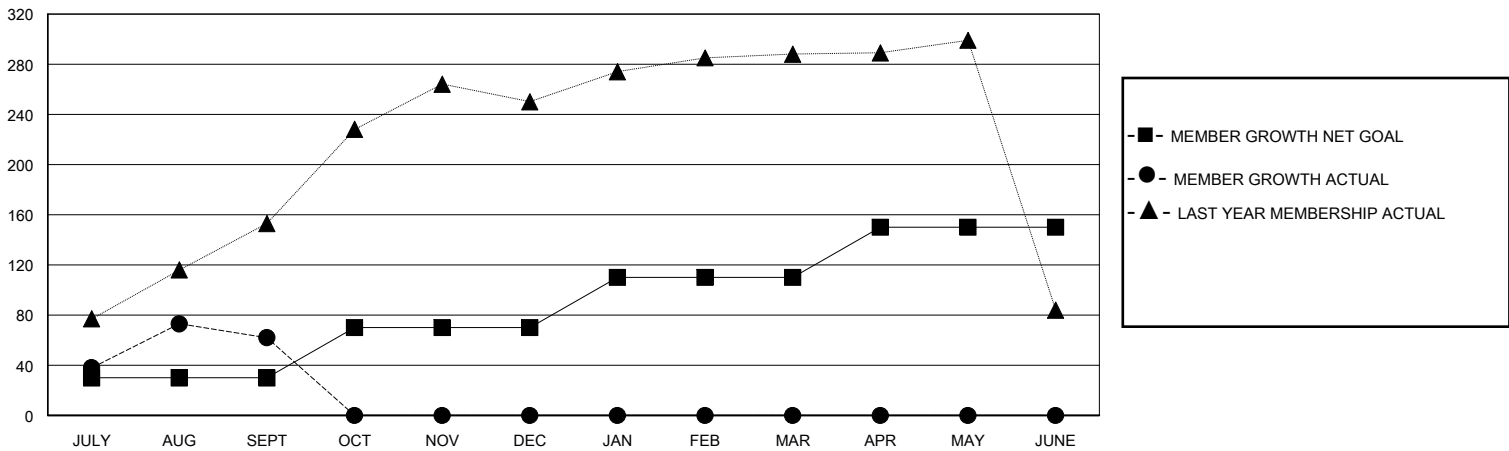
Clubs			
RESULTS FOR 2023-2024			
QUARTER	NEW CLUB GOAL	NEW CLUBS	DROPPED CLUBS
JULY/AUG/SEPT	1	0	0
OCT/NOV/DEC	0	0	0
JAN/FEB/MAR	2	0	0
APR/MAY/JUNE	2	0	0

Members			
RESULTS FOR 2023-2024			
QUARTER	MEMBER GROWTH NET GOAL	MEMBER GROWTH ACTUAL	DROPPED MEMBERS ACTUAL (including transfers)
JULY/AUG/SEPT	30	184	99
OCT/NOV/DEC	40	0	0
JAN/FEB/MAR	40	0	0
APR/MAY/JUNE	40	0	0

GOALS AND ACTUAL NEW CLUBS CUMULATIVE



GOALS AND ACTUAL MEMBERS CUMULATIVE



DROPPED CLUBS: 0	
<b>DROPPED MEMBERS</b>	
DECEASED	4
CLUB CANCELLED	0
OTHER	95
<b>TOTAL</b>	<b>99</b>

58 CLUBS OF 112 ADDED 1 OR MORE NEW MEMBERS

GENDER DISTRIBUTION	
MALE	1,681 (67.67%)
FEMALE	803 (32.33%)

[CLICK HERE FOR CUMULATIVE MEMBERSHIP DATA](#)

TOTAL FAMILY UNIT MEMBERS	95
FAMILY MEMBERS PAYING HALF DUES	61